

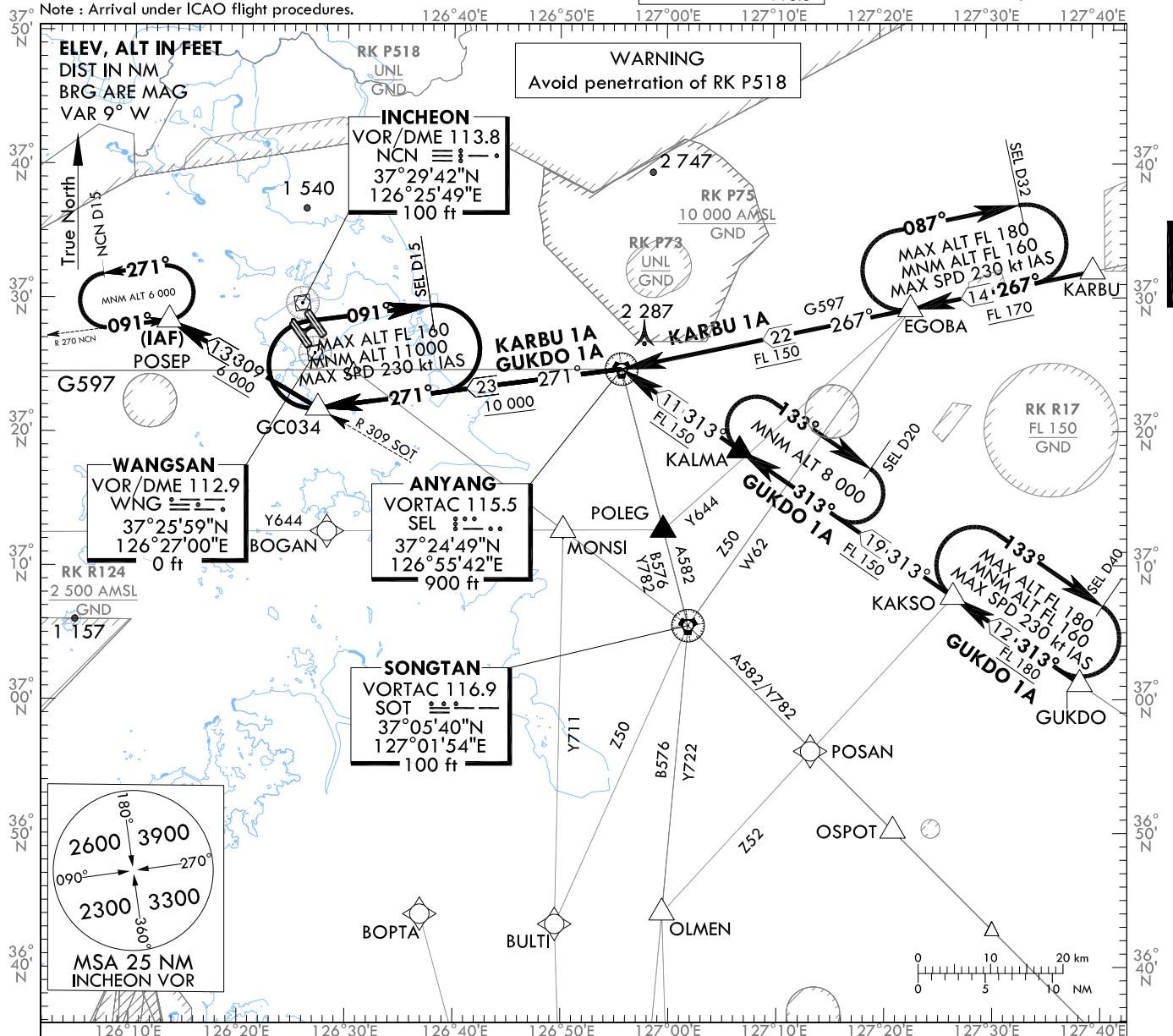
STANDARD ARRIVAL CHART
INSTRUMENT (STAR) - ICAO

TRANSITION ALT 14 000
TRANSITION LVL FL 140

SEOUL APP 119.75
INCHEON TWR 121.35
118.2
118.8

SEOUL/Incheon Intl(RKSI)
RWY 15L
GUKDO 1A, KARBU 1A

Note : Arrival under ICAO flight procedures.



GENERAL INFORMATION

1. For profile descent with clearance "Descend via the (STAR name and number) arrival", pilots should commence descent after passing the First Fix/Waypoint of each arrival.
2. If unable to comply with flight restrictions, advise ATC for alternatives.
3. Maximum holding speed is 230 kt IAS at EGOBA, KAKSO, KALMA and GC034, 200 kt IAS at POSEP.

DESIGNATOR	FROM	ROUTE	DESCENT ALTITUDE
GUKDO ONE ALPHA	G585 /Y685	GUKDO - KAKSO - KALMA - SEL - GC034 - POSEP	At or above FL 180 by KAKSO, FL 150 by SEL, 10 000 ft by GC034, and 6 000 ft by POSEP
KARBU ONE ALPHA	G597 /Y697	KARBU - EGOBA - SEL - GC034 - POSEP	At or above FL 170 by EGOBA, FL 150 by SEL, 10 000 ft by GC034, and 6 000 ft by POSEP

Change : Information of RK P73.

OFFICE OF CIVIL AVIATION

AIRAC AIP AMDT 13/22
Effective : 1600UTC 25 JAN 2023

SEOUL/Incheon Intl(RKSI)

RWY 15L

GUUKDO 1A, KARBU 1A

AERONAUTICAL DATA TABULATION

GUUKDO 1A

Fix / Point		Coordinates	
GUUKDO	R 133/D41 SEL	37°01'10.9"N	127°38'22.9"E
KAKSO	R 133/D30 SEL	37°07'44.6"N	127°26'37.4"E
KALMA	R 133/D11 SEL	37°18'44.9"N	127°06'44.8"E
SEL		37°24'49.0"N	126°55'42.1"E
GC034	R 309/D32 SOT	37°21'51.0"N	126°27'18.0"E
POSEP	R 271/D10 NCN	37°28'21.8"N	126°13'22.0"E

KARBU 1A

Fix / Point		Coordinates	
KARBU	R 087/D36 SEL	37°31'59.0"N	127°39'52.0"E
EGOBA	R 087/D22 SEL	37°29'14.7"N	127°22'45.9"E
SEL		37°24'49.0"N	126°55'42.1"E
GC034	R 309/D32 SOT	37°21'51.0"N	126°27'18.0"E
POSEP	R 271/D10 NCN	37°28'21.8"N	126°13'22.0"E

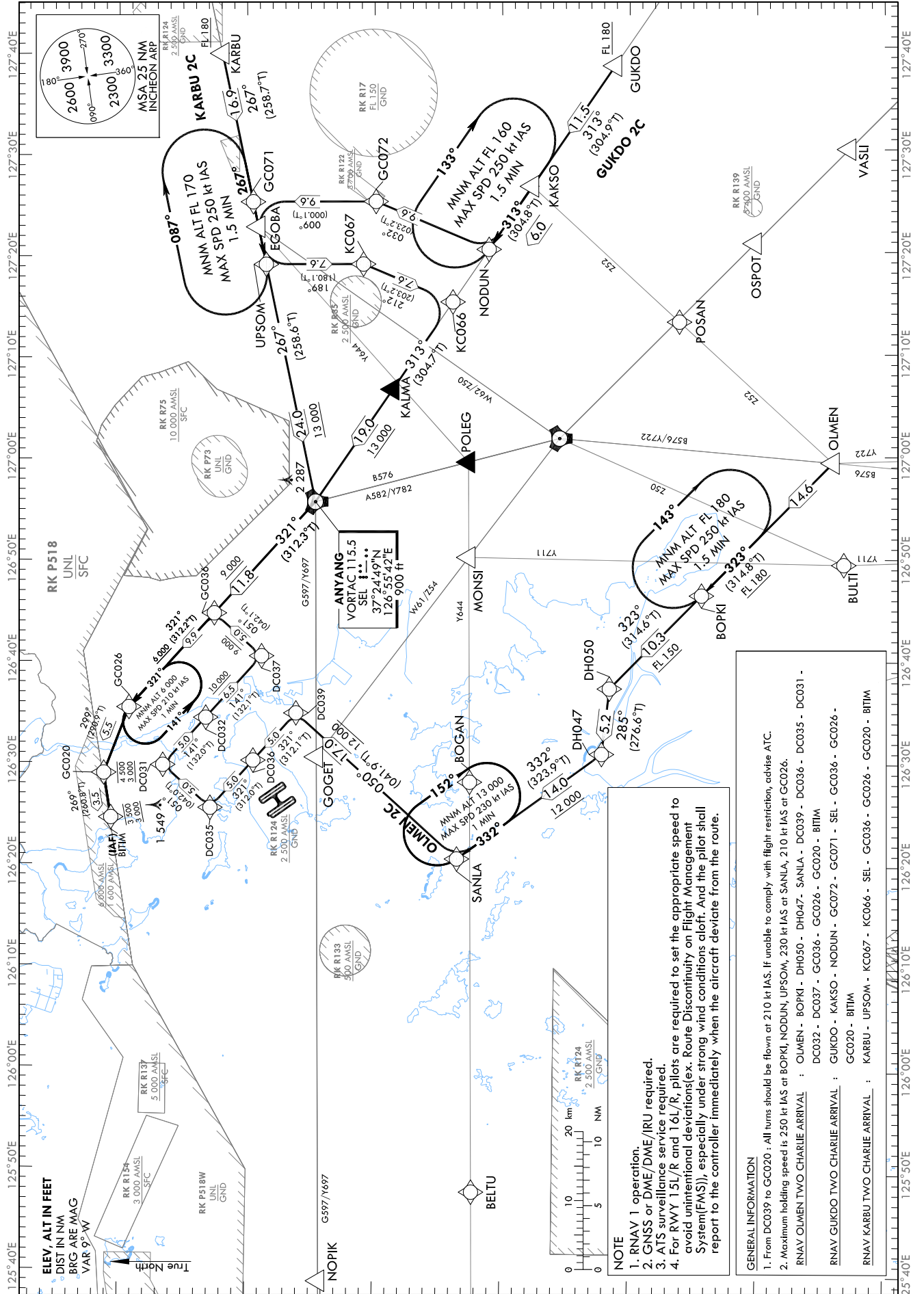
STANDARD ARRIVAL CHART
INSTRUMENT (STAR) - ICAO

TRANSITION ALT 14 000
TRANSITION LVL FL 140

SEOUL APP 119.75
121.35
INCHEON TWR 118.2
118.8

SEOUL/Incheon Intl(RKSI)
RWY 15L/R, RWY 16L/R
RNAV OLMEN 2C
RNAV GUKDO 2C, RNAV KARBU 2C

Note : Arrival under ICAO Flight Procedures.



Change : Information of RK P73 and ALT restrictions.

SEOUL/Incheon Intl(RKSI)
RWY 15L/R, RWY 16L/R
RNAV OLMEN 2C, RNAV GUKDO 2C

AERONAUTICAL DATA TABULATION

Standard Instrument Arrival Procedure Coding Tables

RNAV OLMEN 2C

Serial Number	Path Descriptor	Waypoint Identifier	Fly-over	Course/Track °M(°T)	Distance (NM)	Turn direction	Altitude (ft)	Speed (kt)	Coordinates	VPA/RDH	Navigation specification	Remarks
001	IF	OLMEN	-	-	-	-	-	-	36°44'13.4"N 126°59'27.6"E	-	RNAV 1	-
002	TF	BOPKI	-	323 (314.8)	14.6	-	+FL 180	-	36°54'31.8"N 126°46'30.1"E	-	RNAV 1	-
003	TF	DH050	-	323 (314.6)	10.3	-	+FL 150	-	37°01'44.4"N 126°37'23.0"E	-	RNAV 1	-
004	TF	DH047	-	285 (276.6)	5.2	-	-	-	37°02'20.0"N 126°30'58.0"E	-	RNAV 1	-
005	TF	SANLA	-	332 (323.9)	14.0	-	+12 000	-	37°13'39.5"N 126°20'39.0"E	-	RNAV 1	-
006	TF	DC039	-	050 (041.9)	17.0	-	+12 000	@210	37°26'19.1"N 126°34'55.2"E	-	RNAV 1	-
007	TF	DC036	-	321 (312.1)	5.0	-	-	@210	37°29'40.2"N 126°30'15.4"E	-	RNAV 1	-
008	TF	DC035	-	321 (312.0)	5.0	-	-	@210	37°33'01.2"N 126°25'35.1"E	-	RNAV 1	-
009	TF	DC031	-	051 (042.0)	5.0	-	-	@210	37°36'44.4"N 126°29'47.6"E	-	RNAV 1	-
010	TF	DC032	-	141 (132.0)	5.0	-	-	@210	37°33'23.3"N 126°34'27.9"E	-	RNAV 1	-
011	TF	DC037	-	141 (132.1)	6.5	-	+10 000	@210	37°29'01.6"N 126°40'31.7"E	-	RNAV 1	-
012	TF	GC036	-	051 (042.1)	5.0	-	+9 000	@210	37°32'44.3"N 126°44'44.7"E	-	RNAV 1	-
013	TF	GC026	-	321 (312.2)	9.9	-	+6 000	@210	37°39'24.5"N 126°35'28.2"E	-	RNAV 1	-
014	TF	GC020	-	299 (290.9)	5.5	-	-4 500 +3 000	@210	37°41'22.0"N 126°28'59.8"E	-	RNAV 1	-
015	TF	BITIM	-	269 (260.8)	3.5	-	-3 500 +3 000	-	37°40'48.0"N 126°24'36.1"E	-	RNAV 1	IAF

RNAV GUKDO 2C

Serial Number	Path Descriptor	Waypoint Identifier	Fly-over	Course/Track °M(°T)	Distance (NM)	Turn direction	Altitude (ft)	Speed (kt)	Coordinates	VPA/RDH	Navigation specification	Remarks
001	IF	GUKDO	-	-	-	-	+FL 180	-	37°01'10.9"N 127°38'22.9"E	-	RNAV 1	-
002	TF	KAKSO	-	313 (304.9)	11.5	-	-	-	37°07'44.6"N 127°26'37.4"E	-	RNAV 1	-
003	TF	NODUN	-	313 (304.8)	6.0	-	-	-	37°11'10.1"N 127°20'27.5"E	-	RNAV 1	-
004	TF	GC072	-	032 (023.2)	9.6	-	-	-	37°20'01.0"N 127°25'12.2"E	-	RNAV 1	-
005	TF	GC071	-	009 (000.1)	9.6	-	-	-	37°29'38.5"N 127°25'13.7"E	-	RNAV 1	-
006	TF	SEL	-	267 (258.6)	24.0	-	+13 000	-	37°24'49.0"N 126°55'42.1"E	-	RNAV 1	-
007	TF	GC036	-	321 (312.3)	11.8	-	+9 000	@210	37°32'44.3"N 126°44'44.7"E	-	RNAV 1	-
008	TF	GC026	-	321 (312.2)	9.9	-	+6 000	@210	37°39'24.5"N 126°35'28.2"E	-	RNAV 1	-
009	TF	GC020	-	299 (290.9)	5.5	-	-4 500 +3 000	@210	37°41'22.0"N 126°28'59.8"E	-	RNAV 1	-
010	TF	BITIM	-	269 (260.8)	3.5	-	-3 500 +3 000	-	37°40'48.0"N 126°24'36.1"E	-	RNAV 1	IAF

Change : Information of ALT restrictions for DH050 ~ SANLA and GUKDO ~ GC071.

SEOUL/Incheon Intl(RKSI)
RWY 15L/R, RWY 16L/R
RNAV KARBU 2C

AERONAUTICAL DATA TABULATION

Standard Instrument Arrival Procedure Coding Tables

RNAV KARBU 2C												
Serial Number	Path Descriptor	Waypoint Identifier	Fly-over	Course/Track °M(°T)	Distance (NM)	Turn direction	Altitude (ft)	Speed (kt)	Coordinates	VPA/ RDH	Navigation specification	Remarks
001	IF	KARBU	-	-	-	-	+FL 180	-	37°31'59.0"N 127°39'52.0"E	-	RNAV 1	-
002	TF	UPSOM	-	267 (258.7)	16.9	-	-	-	37°28'38.8"N 127°19'04.3"E	-	RNAV 1	-
003	TF	KC067	-	189 (180.1)	7.6	-	-	-	37°21'01.5"N 127°19'03.7"E	-	RNAV 1	-
004	TF	KC066	-	212 (203.2)	7.6	-	-	-	37°14'01.2"N 127°15'18.8"E	-	RNAV 1	-
005	TF	SEL	-	313 (304.7)	19.0	-	+13 000	-	37°24'49.0"N 126°55'42.1"E	-	RNAV 1	-
006	TF	GC036	-	321 (312.3)	11.8	-	+9 000	@210	37°32'44.3"N 126°44'44.7"E	-	RNAV 1	-
007	TF	GC026	-	321 (312.2)	9.9	-	+6 000	@210	37°39'24.5"N 126°35'28.2"E	-	RNAV 1	-
008	TF	GC020	-	299 (290.9)	5.5	-	-4 500 +3 000	@210	37°41'22.0"N 126°28'59.8"E	-	RNAV 1	-
009	TF	BITIM	-	269 (260.8)	3.5	-	-3 500 +3 000	-	37°40'48.0"N 126°24'36.1"E	-	RNAV 1	IAF

HOLDING PROCEDURE

Holding Identification	Path Descriptor	Waypoint Identifier	Fly-over	Course/Track °M(°T)	Time (min)	Turn direction	Altitude (ft)	Speed (kt)	Coordinates	VPA/RDH	Navigation specification	Remarks
RNAV OLMEN 2C	-	BOPKI	Y	323 (314.8)	1.5	R	+FL 180	-250	36°54'31.8"N 126°46'30.1"E	-	RNAV 1	-
RNAV OLMEN 2C	-	SANLA	Y	332 (323.9)	1.0	R	+13 000	-230	37°13'39.5"N 126°20'39.0"E	-	RNAV 1	-
RNAV GUKDO 2C	-	NODUN	Y	313 (304.8)	1.5	R	+FL 160	-250	37°11'10.1"N 127°20'27.5"E	-	RNAV 1	-
RNAV KARBU 2C	-	UPSOM	Y	267 (258.7)	1.5	R	+FL 170	-250	37°28'38.8"N 127°19'04.3"E	-	RNAV 1	-
RNAV OLMEN 2C RNAV GUKDO 2C RNAV KARBU 2C	-	GC026	Y	321 (312.2)	1.0	L	+6 000	-210	37°39'24.5"N 126°35'28.2"E	-	RNAV 1	-

Change : Information of ALT restrictions for KARBU ~ KC066.

INTENTIONALLY

LEFT

BLANK

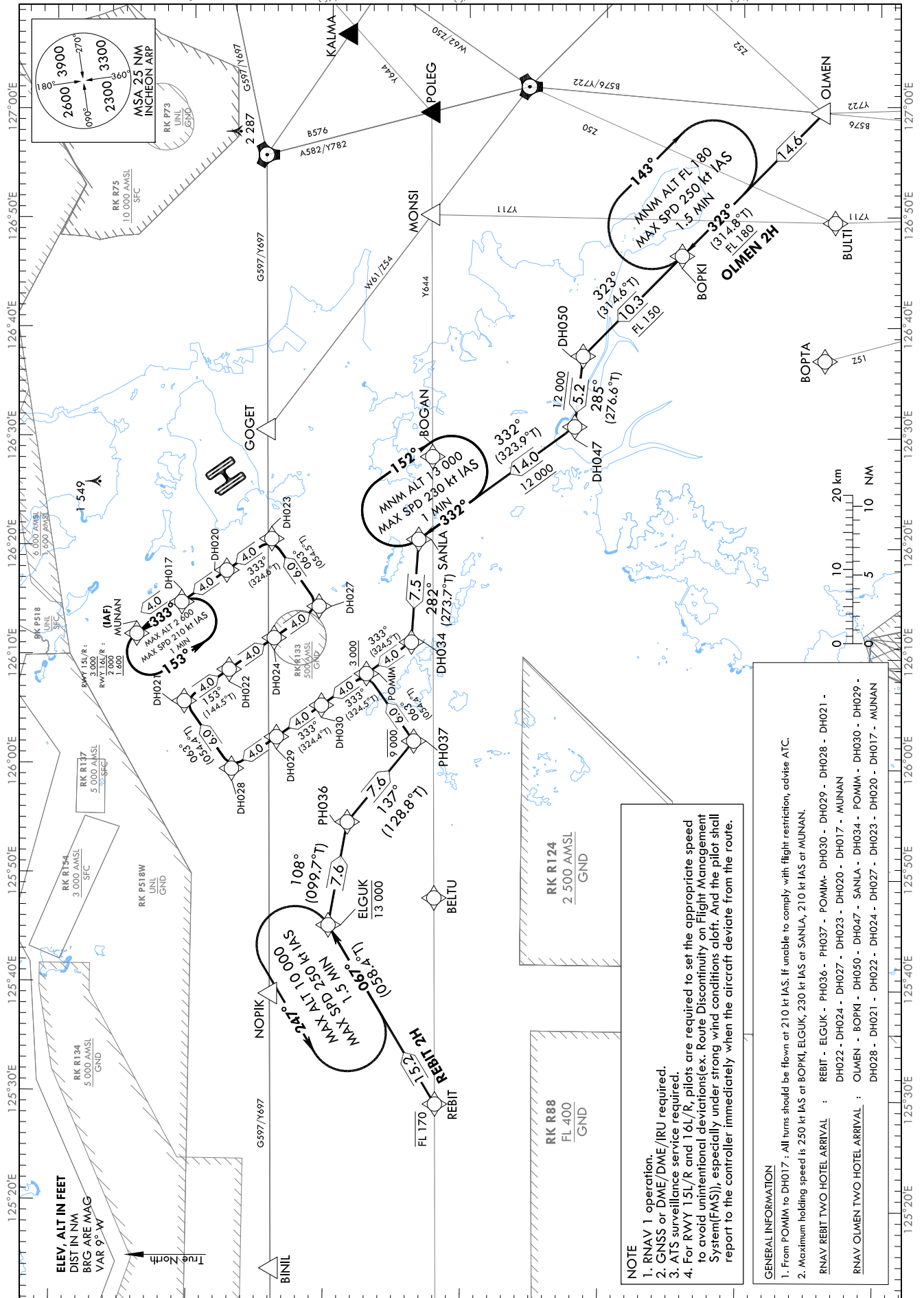
STANDARD ARRIVAL CHART
INSTRUMENT (STAR) - ICAO

TRANSITION ALT 14 000
TRANSITION LVL FL 140

SEOUL APP 119.75
INCHEON TWR 121.35
118.2
118.8

SEOUL/Incheon Intl(RKSI)
RWY 15L/R, RWY 16L/R
RNAV REBIT 2H
RNAV OLMEN 2H

Note : Arrival under ICAO Flight Procedures.



Change : Information of RK P73 and ALT restrictions.

SEOUL/Incheon Intl(RKSI)
RWY 15L/R, RWY 16L/R
RNAV REBIT 2H

AERONAUTICAL DATA TABULATION

Standard Instrument Arrival Procedure Coding Tables

RNAV REBIT 2H												
Serial Number	Path Descriptor	Waypoint Identifier	Fly-over	Course/Track °M(°T)	Distance (NM)	Turn direction	Altitude (ft)	Speed (kt)	Coordinates	VPA/RDH	Navigation specification	Remarks
001	IF	REBIT	-	-	-	-	-FL 170	-	37°12'03.0"N 125°29'12.7"E	-	RNAV 1	-
002	TF	ELGUK	-	067 (058.4)	15.2	-	-13 000	-	37°19'59.4"N 125°45'24.7"E	-	RNAV 1	-
003	TF	PH036	-	108 (099.7)	7.6	-	-	-	37°18'41.6"N 125°54'49.4"E	-	RNAV 1	-
004	TF	PH037	-	137 (128.8)	7.6	-	-9 000	-	37°13'54.3"N 126°02'15.2"E	-	RNAV 1	-
005	TF	POMIM	-	063 (054.4)	6.0	-	+3 000	@210	37°17'23.8"N 126°08'22.1"E	-	RNAV 1	-
006	TF	DH030	-	333 (324.5)	4.0	-	-	@210	37°20'39.4"N 126°05'27.2"E	-	RNAV 1	-
007	TF	DH029	-	333 (324.4)	4.0	-	-	@210	37°23'54.8"N 126°02'32.1"E	-	RNAV 1	-
008	TF	DH028	-	333 (324.4)	4.0	-	-	@210	37°27'10.2"N 125°59'36.8"E	-	RNAV 1	-
009	TF	DH021	-	063 (054.4)	6.0	-	-	@210	37°30'39.9"N 126°05'44.6"E	-	RNAV 1	-
010	TF	DH022	-	153 (144.5)	4.0	-	-	@210	37°27'24.4"N 126°08'39.8"E	-	RNAV 1	-
011	TF	DH024	-	153 (144.5)	4.0	-	-	@210	37°24'08.8"N 126°11'34.8"E	-	RNAV 1	-
012	TF	DH027	-	153 (144.5)	4.0	-	-	@210	37°20'53.1"N 126°14'29.5"E	-	RNAV 1	-
013	TF	DH023	-	063 (054.5)	6.0	-	-	@210	37°24'22.0"N 126°20'37.5"E	-	RNAV 1	-
014	TF	DH020	-	333 (324.6)	4.0	-	-	@210	37°27'37.8"N 126°17'42.9"E	-	RNAV 1	-
015	TF	DH017	-	333 (324.6)	4.0	-	-	@210	37°30'53.6"N 126°14'48.1"E	-	RNAV 1	-
016	TF	MUNAN	-	333 (324.5)	4.0	-	+3 000 for RVV 13 -2 000 +1 600	-	37°34'09.3"N 126°11'53.0"E	-	RNAV 1	IAF

Change : Information of ALT restrictions for POMIM, DH028 ~ DH021, and DH027 ~ DH017.

SEOUL/Incheon Intl(RKSI)
RWY 15L/R, RWY 16L/R
RNAV OLMEN 2H

AERONAUTICAL DATA TABULATION

Standard Instrument Arrival Procedure Coding Tables

RNAV OLMEN 2H													
Serial Number	Path Descriptor	Waypoint Identifier	Fly-over	Course/Track °M(°T)	Distance (NM)	Turn direction	Altitude (ft)	Speed (kt)	Coordinates	VPA/RDH	Navigation specification	Remarks	
001	IF	OLMEN	-	-	-	-	-	-	36°44'13.4"N 126°59'27.6"E	-	RNAV 1	-	
002	TF	BOPKI	-	323 (314.8)	14.6	-	+FL 180	-	36°54'31.8"N 126°46'30.1"E	-	RNAV 1	-	
003	TF	DH050	-	323 (314.6)	10.3	-	+FL 150	-	37°01'44.4"N 126°37'23.0"E	-	RNAV 1	-	
004	TF	DH047	-	285 (276.6)	5.2	-	+12 000	-	37°02'20.0"N 126°30'58.0"E	-	RNAV 1	-	
005	TF	SANLA	-	332 (323.9)	14.0	-	+12 000	-	37°13'39.5"N 126°20'39.0"E	-	RNAV 1	-	
006	TF	DH034	-	282 (273.7)	7.5	-	-	-	37°14'08.2"N 126°11'16.7"E	-	RNAV 1	-	
007	TF	POMIM	-	333 (324.5)	4.0	-	+3 000	@210	37°17'23.8"N 126°08'22.1"E	-	RNAV 1	-	
008	TF	DH030	-	333 (324.5)	4.0	-	-	@210	37°20'39.4"N 126°05'27.2"E	-	RNAV 1	-	
009	TF	DH029	-	333 (324.4)	4.0	-	-	@210	37°23'54.8"N 126°02'32.1"E	-	RNAV 1	-	
010	TF	DH028	-	333 (324.4)	4.0	-	-	@210	37°27'10.2"N 125°59'36.8"E	-	RNAV 1	-	
011	TF	DH021	-	063 (054.4)	6.0	-	-	@210	37°30'39.9"N 126°05'44.6"E	-	RNAV 1	-	
012	TF	DH022	-	153 (144.5)	4.0	-	-	@210	37°27'24.4"N 126°08'39.8"E	-	RNAV 1	-	
013	TF	DH024	-	153 (144.5)	4.0	-	-	@210	37°24'08.8"N 126°11'34.8"E	-	RNAV 1	-	
014	TF	DH027	-	153 (144.5)	4.0	-	-	@210	37°20'53.1"N 126°14'29.5"E	-	RNAV 1	-	
015	TF	DH023	-	063 (054.5)	6.0	-	-	@210	37°24'22.0"N 126°20'37.5"E	-	RNAV 1	-	
016	TF	DH020	-	333 (324.6)	4.0	-	-	@210	37°27'37.8"N 126°17'42.9"E	-	RNAV 1	-	
017	TF	DH017	-	333 (324.6)	4.0	-	-	@210	37°30'53.6"N 126°14'48.1"E	-	RNAV 1	-	
018	TF	MUNAN	-	333 (324.5)	4.0	-	+3 000 for RWY 15 -2 000 +1 600	-	37°34'09.3"N 126°11'53.0"E	-	RNAV 1	IAF	

HOLDING PROCEDURE

Holding Identification	Path Descriptor	Waypoint Identifier	Fly-over	Course/Track °M(°T)	Time (min)	Turn direction	Altitude (ft)	Speed (kt)	Coordinates	VPA/RDH	Navigation specification	Remarks
RNAV REBIT 2H	-	ELGUK	Y	067 (058.4)	1.5	L	-10 000	-250	37°19'59.4"N 125°45'24.7"E	-	RNAV 1	-
RNAV OLMEN 2H	-	BOPKI	Y	323 (314.8)	1.5	R	+FL 180	-250	36°54'31.8"N 126°46'30.1"E	-	RNAV 1	-
RNAV OLMEN 2H	-	SANLA	Y	332 (323.9)	1.0	R	+13 000	-230	37°13'39.5"N 126°20'39.0"E	-	RNAV 1	-
RNAV REBIT 2H RNAV OLMEN 2H	-	MUNAN	Y	333 (324.5)	1.0	L	-2 600	-210	37°34'09.3"N 126°11'53.0"E	-	RNAV 1	-

Change : Information of ALT restrictions for DH050 ~ SANLA, POMIM, DH028 ~ DH021, and DH027 ~ DH017.

INTENTIONALLY

LEFT

BLANK

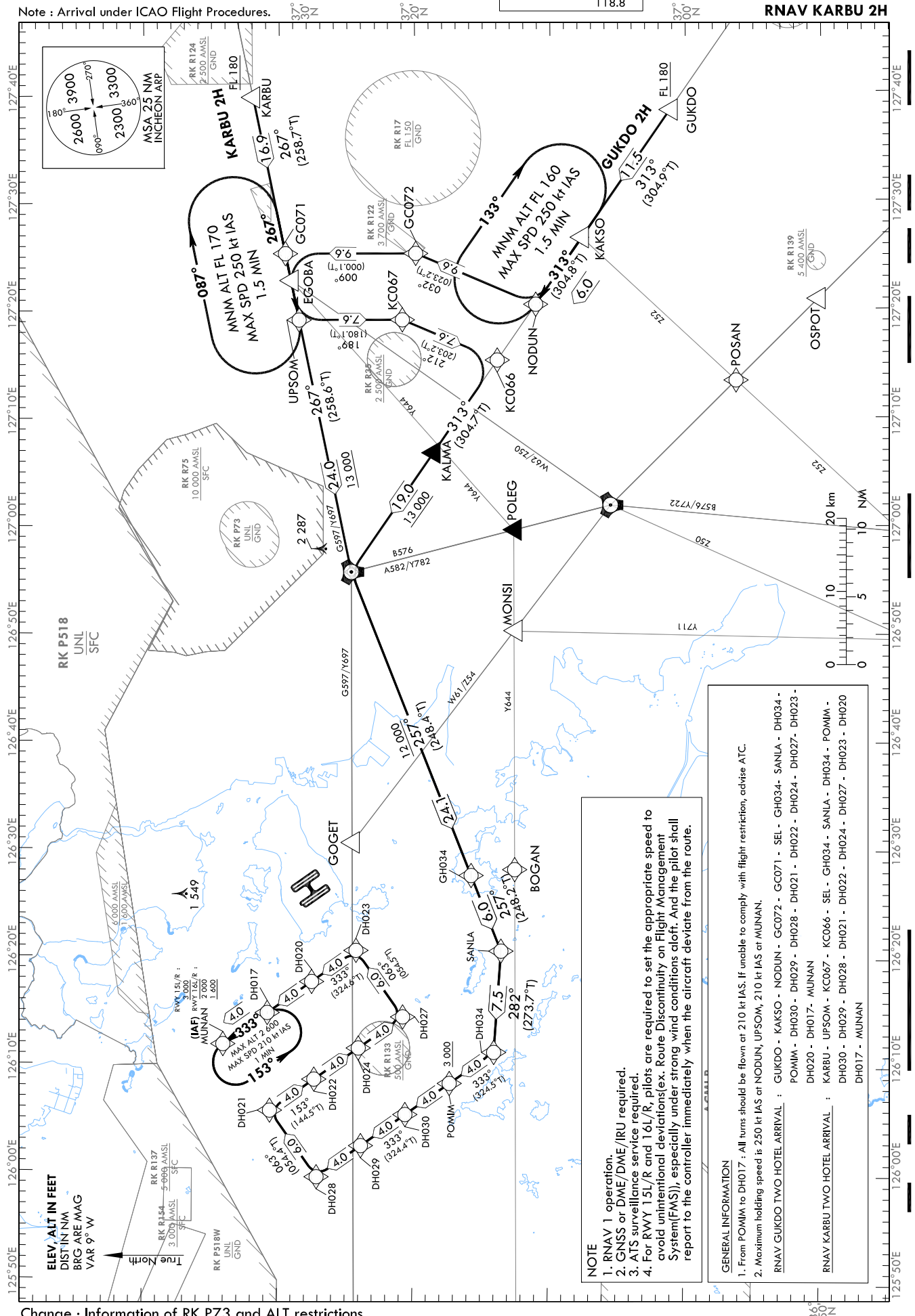
STANDARD ARRIVAL CHART
INSTRUMENT (STAR) - ICAO

TRANSITION ALT 14 000
TRANSITION LVL FL 140

SEOUL APP 119.75
INCHEON TWR 121.35
118.2
118.8

SEOUL/Incheon Intl(RKSI)
RWY 15L/R, RWY 16L/R
RNAV GUKDO 2H
RNAV KARBU 2H

Note : Arrival under ICAO Flight Procedures.



Change : Information of RK P73 and ALT restrictions.

SEOUL/Incheon Intl(RKSI)
RWY 15L/R, RWY 16L/R
RNAV GUKDO 2H

AERONAUTICAL DATA TABULATION

Standard Instrument Arrival Procedure Coding Tables

RNAV GUKDO 2H												
Serial Number	Path Descriptor	Waypoint Identifier	Fly-over	Course/Track °M(°T)	Distance (NM)	Turn direction	Altitude (ft)	Speed (kt)	Coordinates	VPA/ RDH	Navigation specification	Remarks
001	IF	GUKDO	-	-	-	-	+FL 180	-	37°01'10.9"N 127°38'22.9"E	-	RNAV 1	-
002	TF	KAKSO	-	313 (304.9)	11.5	-	-	-	37°07'44.6"N 127°26'37.4"E	-	RNAV 1	-
003	TF	NODUN	-	313 (304.8)	6.0	-	-	-	37°11'10.1"N 127°20'27.5"E	-	RNAV 1	-
004	TF	GC072	-	032 (023.2)	9.6	-	-	-	37°20'01.0"N 127°25'12.2"E	-	RNAV 1	-
005	TF	GC071	-	009 (000.1)	9.6	-	-	-	37°29'38.5"N 127°25'13.7"E	-	RNAV 1	-
006	TF	SEL	-	267 (258.6)	24.0	-	+13 000	-	37°24'49.0"N 126°55'42.1"E	-	RNAV 1	-
007	TF	GH034	-	257 (248.4)	24.1	-	+12 000	-	37°15'53.8"N 126°27'37.5"E	-	RNAV 1	-
008	TF	SANLA	-	257 (248.2)	6.0	-	-	-	37°13'39.5"N 126°20'39.0"E	-	RNAV 1	-
009	TF	DH034	-	282 (273.7)	7.5	-	-	-	37°14'08.2"N 126°11'16.7"E	-	RNAV 1	-
010	TF	POMIM	-	333 (324.5)	4.0	-	+3 000	@210	37°17'23.8"N 126°08'22.1"E	-	RNAV 1	-
011	TF	DH030	-	333 (324.5)	4.0	-	-	@210	37°20'39.4"N 126°05'27.2"E	-	RNAV 1	-
012	TF	DH029	-	333 (324.4)	4.0	-	-	@210	37°23'54.8"N 126°02'32.1"E	-	RNAV 1	-
013	TF	DH028	-	333 (324.4)	4.0	-	-	@210	37°27'10.2"N 125°59'36.8"E	-	RNAV 1	-
014	TF	DH021	-	063 (054.4)	6.0	-	-	@210	37°30'39.9"N 126°05'44.6"E	-	RNAV 1	-
015	TF	DH022	-	153 (144.5)	4.0	-	-	@210	37°27'24.4"N 126°08'39.8"E	-	RNAV 1	-
016	TF	DH024	-	153 (144.5)	4.0	-	-	@210	37°24'08.8"N 126°11'34.8"E	-	RNAV 1	-
017	TF	DH027	-	153 (144.5)	4.0	-	-	@210	37°20'53.1"N 126°14'29.5"E	-	RNAV 1	-
018	TF	DH023	-	063 (054.5)	6.0	-	-	@210	37°24'22.0"N 126°20'37.5"E	-	RNAV 1	-
019	TF	DH020	-	333 (324.6)	4.0	-	-	@210	37°27'37.8"N 126°17'42.9"E	-	RNAV 1	-
020	TF	DH017	-	333 (324.6)	4.0	-	-	@210	37°30'53.6"N 126°14'48.1"E	-	RNAV 1	-
021	TF	MUNAN	-	333 (324.5)	4.0	-	+3 000 for RWY 15 -2 000 +1 600 for RWY 16	-	37°34'09.3"N 126°11'53.0"E	-	RNAV 1	IAF

Change : Information of ALT restrictions for GUKDO ~ GC071, SANLA, POMIM, DH028 ~ DH021, and DH027 ~ DH017.

SEOUL/Incheon Intl(RKSI)
RWY 15L/R, RWY 16L/R
RNAV KARBU 2H

AERONAUTICAL DATA TABULATION

Standard Instrument Arrival Procedure Coding Tables

RNAV KARBU 2H		Waypoint Identifier	Fly-over	Course/Track °M(T)	Distance (NM)	Turn direction	Altitude (ft)	Speed (kt)	Coordinates	VPA/ RDH	Navigation specification	Remarks
Serial Number	Path Descriptor											
001	IF	KARBU	-	-	-	-	+FL 180	-	37°31'59.0"N 127°39'52.0"E	-	RNAV 1	-
002	TF	UPSOM	-	267 (258.7)	16.9	-	-	-	37°28'38.8"N 127°19'04.3"E	-	RNAV 1	-
003	TF	KC067	-	189 (180.1)	7.6	-	-	-	37°21'01.5"N 127°19'03.7"E	-	RNAV 1	-
004	TF	KC066	-	212 (203.2)	7.6	-	-	-	37°14'01.2"N 127°15'18.8"E	-	RNAV 1	-
005	TF	SEL	-	313 (304.7)	19.0	-	+13 000	-	37°24'49.0"N 126°55'42.1"E	-	RNAV 1	-
006	TF	GH034	-	257 (248.4)	24.1	-	+12 000	-	37°15'53.8"N 126°27'37.5"E	-	RNAV 1	-
007	TF	SANLA	-	257 (248.2)	6.0	-	-	-	37°13'39.5"N 126°20'39.0"E	-	RNAV 1	-
008	TF	DH034	-	282 (273.7)	7.5	-	-	-	37°14'08.2"N 126°11'16.7"E	-	RNAV 1	-
009	TF	POMIM	-	333 (324.5)	4.0	-	+3 000	@210	37°17'23.8"N 126°08'22.1"E	-	RNAV 1	-
010	TF	DH030	-	333 (324.5)	4.0	-	-	@210	37°20'39.4"N 126°05'27.2"E	-	RNAV 1	-
011	TF	DH029	-	333 (324.4)	4.0	-	-	@210	37°23'54.8"N 126°02'32.1"E	-	RNAV 1	-
012	TF	DH028	-	333 (324.4)	4.0	-	-	@210	37°27'10.2"N 125°59'36.8"E	-	RNAV 1	-
013	TF	DH021	-	063 (054.4)	6.0	-	-	@210	37°30'39.9"N 126°05'44.6"E	-	RNAV 1	-
014	TF	DH022	-	153 (144.5)	4.0	-	-	@210	37°27'24.4"N 126°08'39.8"E	-	RNAV 1	-
015	TF	DH024	-	153 (144.5)	4.0	-	-	@210	37°24'08.8"N 126°11'34.8"E	-	RNAV 1	-
016	TF	DH027	-	153 (144.5)	4.0	-	-	@210	37°20'53.1"N 126°14'29.5"E	-	RNAV 1	-
017	TF	DH023	-	063 (054.5)	6.0	-	-	@210	37°24'22.0"N 126°20'37.5"E	-	RNAV 1	-
018	TF	DH020	-	333 (324.6)	4.0	-	-	@210	37°27'37.8"N 126°17'42.9"E	-	RNAV 1	-
019	TF	DH017	-	333 (324.6)	4.0	-	-	@210	37°30'53.6"N 126°14'48.1"E	-	RNAV 1	-
020	TF	MUNAN	-	333 (324.5)	4.0	-	+3 000 for RWY 15 -2 000 +1 600 for RWY 16	-	37°34'09.3"N 126°11'53.0"E	-	RNAV 1	IAF

HOLDING PROCEDURE

Holding Identification	Path Descriptor	Waypoint Identifier	Fly-over	Course/Track °M(T)	Time (min)	Turn direction	Altitude (ft)	Speed (kt)	Coordinates	VPA/ RDH	Navigation specification	Remarks
RNAV GUKDO 2H	-	NODUN	Y	313 (304.8)	1.5	R	+FL 160	-250	37°11'10.1"N 127°20'27.5"E	-	RNAV 1	-
RNAV KARBU 2H	-	UPSOM	Y	267 (258.7)	1.5	R	+FL 170	-250	37°28'38.8"N 127°19'04.3"E	-	RNAV 1	-
RNAV GUKDO 2H RNAV KARBU 2H	-	MUNAN	Y	333 (324.5)	1.0	L	-2 600	-210	37°34'09.3"N 126°11'53.0"E	-	RNAV 1	-

Change : Information of ALT restrictions for KARBU ~ KC066, SANLA, POMIM, DH028 ~ DH021, and DH027 ~ DH017.

INTENTIONALLY

LEFT

BLANK

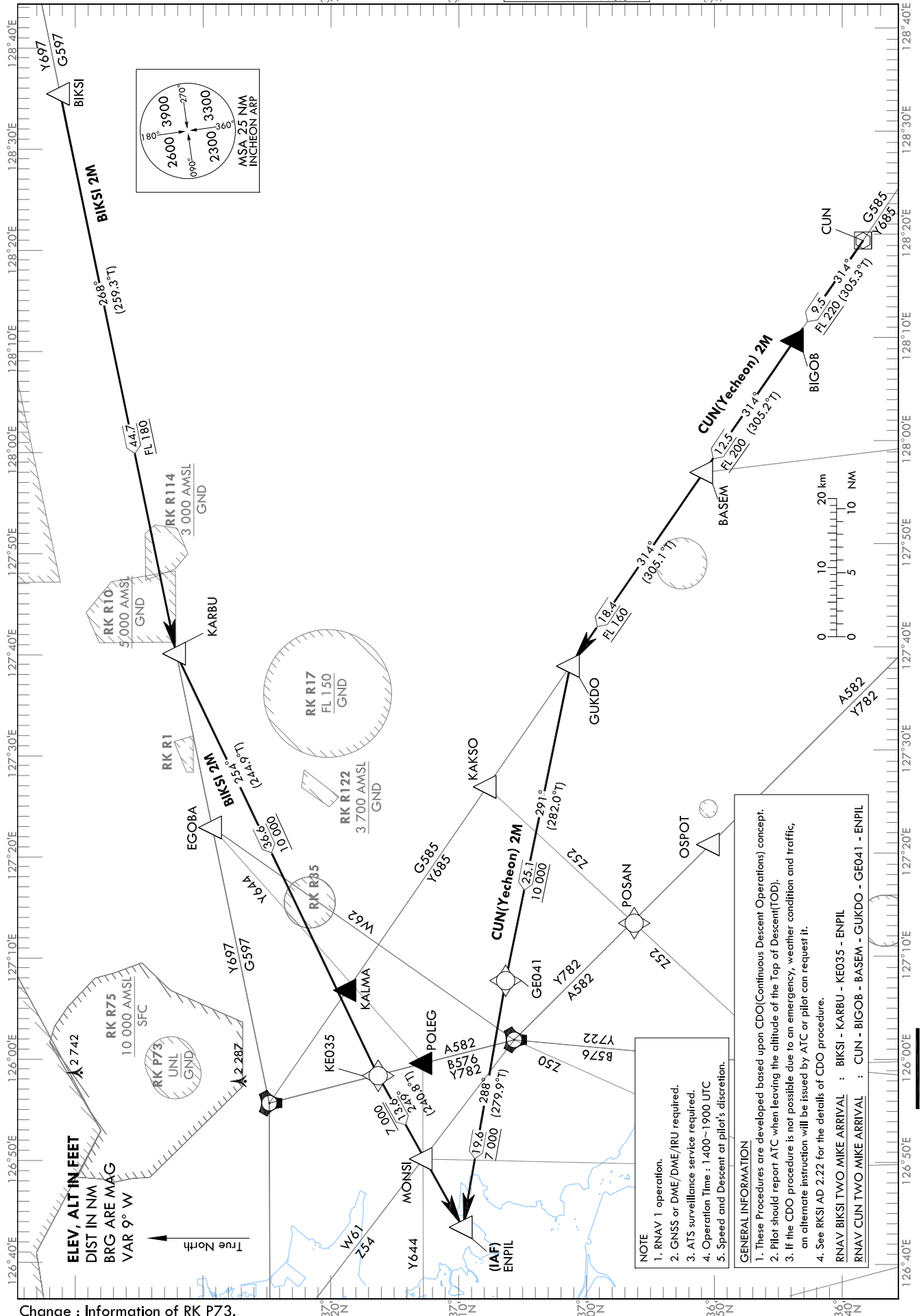
STANDARD ARRIVAL CHART
INSTRUMENT (STAR) - ICAO

TRANSITION ALT 14 000
TRANSITION LVL FL 140

DAEGU ACC 134.175
SEOUL APP 120.575
SEOUL 119.75
INCHEON TWR 121.35
INCHEON 118.2
INCHEON 118.8

SEOUL/Incheon Int'l(RKSI)
RWY 33L/R, RWY 34L/R
RNAV BIKSI 2M
RNAV CUN 2M

Note : Arrival under ICAO Flight Procedures.



SEOUL/Incheon Intl(RKSI)
RWY 33L/R RWY 34L/R
RNAV BIKSI 2M, RNAV CUN 2M

AERONAUTICAL DATA TABULATION

Standard Instrument Arrival Procedure Coding Tables

RNAV BIKSI 2M

Serial Number	Path Descriptor	Waypoint Identifier	Fly-over	Course/Track °M(°T)	Distance (NM)	Turn direction	Altitude (ft)	Speed (kt)	Coordinates	VPA/TCH	Navigation specification	Remarks
001	IF	BIKSI	-	-	-	-	-	-	37°40'32.0"N 128°35'04.0"E	-	RNAV 1	-
002	TF	KARBU	-	268 (259.3)	44.7	-	+FL 180	-	37°31'59.0"N 127°39'52.0"E	-	RNAV 1	-
003	TF	KE035	-	254 (244.9)	36.6	-	+10 000	-	37°16'18.0"N 126°58'23.2"E	-	RNAV 1	-
004	TF	ENPIL	-	249 (240.8)	13.6	-	+7 000	-	37°09'39.0"N 126°43'34.0"E	-	RNAV 1	IAF

RNAV CUN 2M

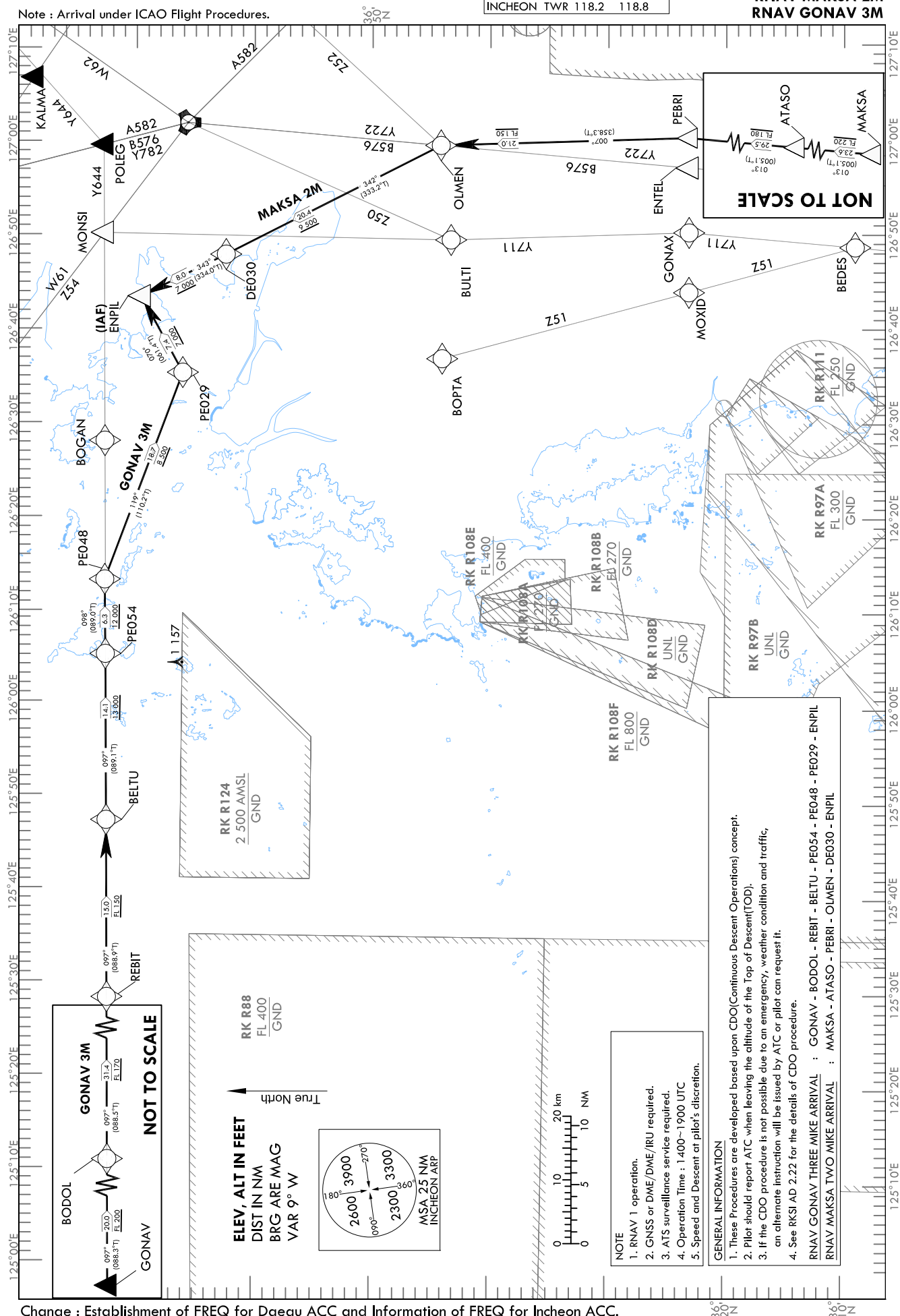
Serial Number	Path Descriptor	Waypoint Identifier	Fly-over	Course/Track °M(°T)	Distance (NM)	Turn direction	Altitude (ft)	Speed (kt)	Coordinates	VPA/TCH	Navigation specification	Remarks
001	IF	CUN	-	-	-	-	-	-	36°37'55.3"N 128°19'31.5"E	-	RNAV 1	-
002	TF	BIGOB	-	314 (305.3)	9.5	-	+FL 220	-	36°43'25.4"N 128°09'52.0"E	-	RNAV 1	-
003	TF	BASEM	-	314 (305.2)	12.5	-	+FL 200	-	36°50'37.2"N 127°57'09.9"E	-	RNAV 1	-
004	TF	GUKDO	-	314 (305.1)	18.4	-	+FL 160	-	37°01'10.9"N 127°38'22.9"E	-	RNAV 1	-
005	TF	GE041	-	291 (282.0)	25.1	-	+10 000	-	37°06'19.6"N 127°07'40.9"E	-	RNAV 1	-
006	TF	ENPIL	-	288 (279.9)	19.6	-	+7 000	-	37°09'39.0"N 126°43'34.0"E	-	RNAV 1	IAF

TRANSITION	ALT	14 000
TRANSITION	LVL	FL 140

DAEGU	ACC	132.8	
INCHEON	ACC	126.175	
SEOUL	APP	119.75	121.35
INCHEON	TWR	118.2	118.8

SEOUL/Incheon Intl(RKSI)
RWY 33L/R RWY 34L/R
RNAV MAKSA 2M
RNAV GONAV 3M

Note : Arrival under ICAO Flight Procedures.



Change : Establishment of FREQ for Daegu ACC and Information of FREQ for Incheon ACC.

SEOUL/Incheon Intl(RKSI)
RWY 33L/R RWY 34L/R
RNAV GONAV 3M, RNAV MAKSA 2M

AERONAUTICAL DATA TABULATION

Standard Instrument Arrival Procedure Coding Tables

RNAV GONAV 3M												
Serial Number	Path Descriptor	Waypoint Identifier	Fly-over	Course/Track °M(°T)	Distance (NM)	Turn direction	Altitude (ft)	Speed (kt)	Coordinates	VPA/TCH	Navigation specification	Remarks
001	IF	GONAV	-	-	-	-	-	-	37°10'48.4"N 124°24'52.6"E	-	RNAV 1	-
002	TF	BODOL	-	097 (088.3)	20.0	-	+FL 200	-	37°11'21.6"N 124°49'53.7"E	-	RNAV 1	-
003	TF	REBIT	-	097 (088.5)	31.4	-	+FL 170	-	37°12'03.0"N 125°29'12.7"E	-	RNAV 1	-
004	TF	BELTU	-	097 (088.9)	15.0	-	+FL 150	-	37°12'18.2"N 125°47'59.0"E	-	RNAV 1	-
005	TF	PE054	-	097 (089.1)	14.1	-	+13 000	-	37°12'30.7"N 126°05'34.8"E	-	RNAV 1	-
006	TF	PE048	-	098 (089.0)	6.3	-	+12 000	-	37°12'37.2"N 126°13'28.7"E	-	RNAV 1	-
007	TF	PE029	-	119 (110.2)	18.7	-	+8 500	-	37°06'06.2"N 126°35'26.7"E	-	RNAV 1	-
008	TF	ENPIL	-	070 (061.4)	7.4	-	+7 000	-	37°09'39.0"N 126°43'34.0"E	-	RNAV 1	IAF

RNAV MAKSA 2M												
Serial Number	Path Descriptor	Waypoint Identifier	Fly-over	Course/Track °M(°T)	Distance (NM)	Turn direction	Altitude (ft)	Speed (kt)	Coordinates	VPA/TCH	Navigation specification	Remarks
001	IF	MAKSA	-	-	-	-	-	-	35°30'11.3"N 126°54'22.0"E	-	RNAV 1	-
002	TF	ATASO	-	013 (005.1)	23.6	-	+FL 220	-	35°53'43.6"N 126°56'57.0"E	-	RNAV 1	-
003	TF	PEBRI	-	013 (005.1)	29.5	-	+FL 180	-	36°23'10.8"N 127°00'13.3"E	-	RNAV 1	-
004	TF	OLMEN	-	007 (358.3)	21.0	-	+FL 150	-	36°44'13.4"N 126°59'27.6"E	-	RNAV 1	-
005	TF	DE030	-	342 (333.2)	20.4	-	+9 500	-	37°02'27.1"N 126°47'57.6"E	-	RNAV 1	-
006	TF	ENPIL	-	343 (334.0)	8.0	-	+7 000	-	37°09'39.0"N 126°43'34.0"E	-	RNAV 1	IAF

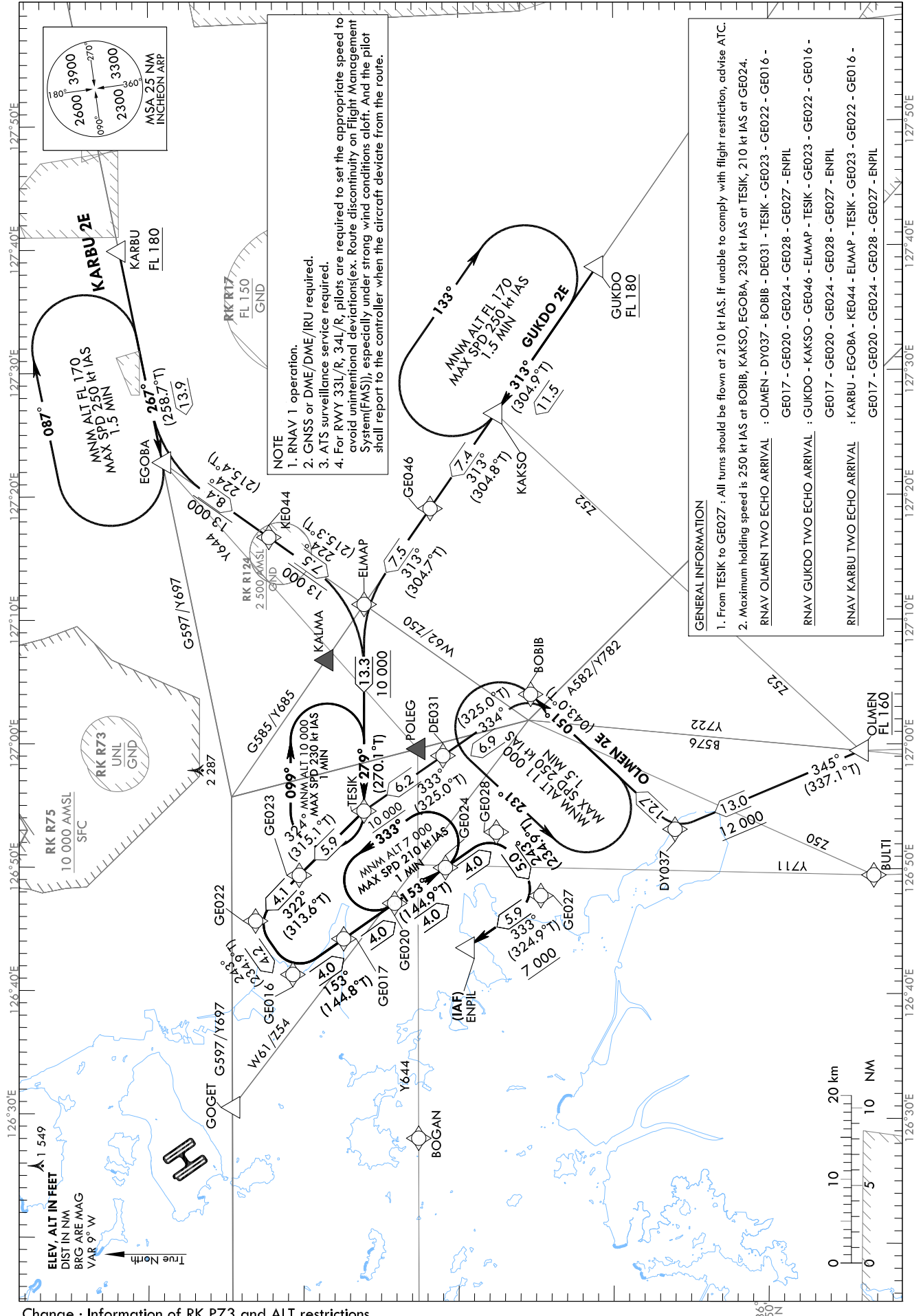
STANDARD ARRIVAL CHART
INSTRUMENT (STAR) - ICAO

TRANSITION ALT 14 000
TRANSITION LVL FL 140

SEOUL APP 119.75
121.35
INCHEON TWR 118.2
118.8

SEOUL/Incheon Intl(RKSI)
RWY 33L/R, RWY 34L/R
RNAV OLMEN 2E
RNAV GUKDO 2E, RNAV KARBU 2E

Note : Arrival under ICAO Flight Procedures.



Change : Information of RK P73 and ALT restrictions.

SEOUL/Incheon Intl(RKSI)
RWY 33L/R, RWY 34L/R
RNAV OLMEN 2E

AERONAUTICAL DATA TABULATION

Standard Instrument Arrival Procedure Coding Tables

RNAV OLMEN 2E													
Serial Number	Path Descriptor	Waypoint Identifier	Fly-over	Course/Track (°M/T)	Distance (NM)	Turn direction	Altitude (ft)	Speed (kt)	Coordinates	VPA/TCH	Navigation specification	Remarks	
001	IF	OLMEN	-	-	-	-	+FL 160	-	36°44'13.4"N 126°59'27.6"E	-	RNAV 1	-	-
002	TF	DY037	-	345 (337.1)	13.0	-	+12 000	-	36°56'12.5"N 126°53'08.4"E	-	RNAV 1	-	-
003	TF	BO81B	-	051 (043.0)	12.7	-	-	-250	37°05'31.6"N 127°03'59.2"E	-	RNAV 1	-	-
004	TF	DE031	-	334 (325.0)	6.9	-	-	-250	37°11'11.2"N 126°59'02.3"E	-	RNAV 1	-	-
005	TF	TESIK	-	333 (325.0)	6.2	-	+10 000	@210	37°16'16.6"N 126°54'34.5"E	-	RNAV 1	-	-
006	TF	GE023	-	324 (315.1)	5.9	-	-	@210	37°20'26.8"N 126°49'22.7"E	-	RNAV 1	-	-
007	TF	GE022	-	322 (313.6)	4.1	-	-	@210	37°23'15.5"N 126°45'40.4"E	-	RNAV 1	-	-
008	TF	GE016	-	243 (234.9)	4.2	-	-	@210	37°20'50.4"N 126°41'21.8"E	-	RNAV 1	-	-
009	TF	GE017	-	153 (144.8)	4.0	-	-	@210	37°17'33.9"N 126°44'15.1"E	-	RNAV 1	-	-
010	TF	GE020	-	153 (144.8)	4.0	-	-	@210	37°14'17.5"N 126°47'08.2"E	-	RNAV 1	-	-
011	TF	GE024	-	153 (144.9)	4.0	-	-	@210	37°11'00.9"N 126°50'01.0"E	-	RNAV 1	-	-
012	TF	GE028	-	153 (144.9)	4.0	-	-	@210	37°07'44.3"N 126°52'53.5"E	-	RNAV 1	-	-
013	TF	GE027	-	243 (234.9)	5.0	-	-	@210	37°04'51.6"N 126°47'46.7"E	-	RNAV 1	-	-
014	TF	ENPIL	-	333 (324.9)	5.9	-	+7 000	-	37°09'39.0"N 126°43'34.0"E	-	RNAV 1	-	IAF

Change : Information of ALT restrictions for DY037, DE031, GE022, and GE028.

SEOUL/Incheon Intl(RKSI)
RWY 33L/R, RWY 34L/R
RNAV GUKDO 2E

AERONAUTICAL DATA TABULATION

Standard Instrument Arrival Procedure Coding Tables

RNAV GUKDO 2E													
Serial Number	Path Descriptor	Waypoint Identifier	Fly-over	Course/Track °M(°T)	Distance (NM)	Turn direction	Altitude (ft)	Speed (kt)	Coordinates	VPA/ TCH	Navigation specification	Remarks	
001	IF	GUKDO	-	-	-	-	+FL 180	-	37°01'10.9"N 127°38'22.9"E	-	RNAV 1	-	-
002	TF	KAKSO	-	313 (304.9)	11.5	-	-	-	37°07'44.6"N 127°26'37.4"E	-	RNAV 1	-	-
003	TF	GE046	-	313 (304.8)	7.4	-	-	-	37°11'59.6"N 127°18'58.3"E	-	RNAV 1	-	-
004	TF	ELMAP	-	313 (304.7)	7.5	-	-	-250	37°16'16.0"N 127°11'14.9"E	-	RNAV 1	-	-
005	TF	TESIK	-	279 (270.1)	13.3	-	+10 000	@210	37°16'16.6"N 126°54'34.5"E	-	RNAV 1	-	-
006	TF	GE023	-	324 (315.1)	5.9	-	-	@210	37°20'26.8"N 126°49'22.7"E	-	RNAV 1	-	-
007	TF	GE022	-	322 (313.6)	4.1	-	-	@210	37°23'15.5"N 126°45'40.4"E	-	RNAV 1	-	-
008	TF	GE016	-	243 (234.9)	4.2	-	-	@210	37°20'50.4"N 126°41'21.8"E	-	RNAV 1	-	-
009	TF	GE017	-	153 (144.8)	4.0	-	-	@210	37°17'33.9"N 126°44'15.1"E	-	RNAV 1	-	-
010	TF	GE020	-	153 (144.8)	4.0	-	-	@210	37°14'17.5"N 126°47'08.2"E	-	RNAV 1	-	-
011	TF	GE024	-	153 (144.9)	4.0	-	-	@210	37°11'00.9"N 126°50'01.0"E	-	RNAV 1	-	-
012	TF	GE028	-	153 (144.9)	4.0	-	-	@210	37°07'44.3"N 126°52'53.5"E	-	RNAV 1	-	-
013	TF	GE027	-	243 (234.9)	5.0	-	-	@210	37°04'51.6"N 126°47'46.7"E	-	RNAV 1	-	-
014	TF	ENPIL	-	333 (324.9)	5.9	-	+7 000	-	37°09'39.0"N 126°43'34.0"E	-	RNAV 1	-	IAF

Change : Information of ALT restrictions for KAKSO, GE046, GE022, and GE028.

SEOUL/Incheon Intl(RKSI)
RWY 33L/R, RWY 34L/R
RNAV KARBU 2E

AERONAUTICAL DATA TABULATION

Standard Instrument Arrival Procedure Coding Tables

RNAV KARBU 2E

Serial Number	Path Descriptor	Waypoint Identifier	Fly-over	Course/Track °M(°T)	Distance (NM)	Turn direction	Altitude (ft)	Speed (kt)	Coordinates	VPA/ TCH	Navigation specification	Remarks
001	IF	KARBU	-	-	-	-	+FL 180	-	37°31'59.0"N 127°39'52.0"E	-	RNAV 1	-
002	TF	EGOBA	-	267 (258.7)	13.9	-	-	-	37°29'14.7"N 127°22'45.9"E	-	RNAV 1	-
003	TF	KE044	-	224 (215.4)	8.4	-	+13 000	-	37°22'23.8"N 127°16'40.7"E	-	RNAV 1	-
004	TF	ELMAP	-	224 (215.3)	7.5	-	+13 000	-250	37°16'16.0"N 127°11'4.9"E	-	RNAV 1	-
005	TF	TESIK	-	279 (270.1)	13.3	-	+10 000	@210	37°16'16.6"N 126°54'34.5"E	-	RNAV 1	-
006	TF	GE023	-	324 (315.1)	5.9	-	-	@210	37°20'26.8"N 126°49'22.7"E	-	RNAV 1	-
007	TF	GE022	-	322 (313.6)	4.1	-	-	@210	37°23'15.5"N 126°45'40.4"E	-	RNAV 1	-
008	TF	GE016	-	243 (234.9)	4.2	-	-	@210	37°20'50.4"N 126°41'21.8"E	-	RNAV 1	-
009	TF	GE017	-	153 (144.8)	4.0	-	-	@210	37°17'33.9"N 126°44'15.1"E	-	RNAV 1	-
010	TF	GE020	-	153 (144.8)	4.0	-	-	@210	37°14'17.5"N 126°47'08.2"E	-	RNAV 1	-
011	TF	GE024	-	153 (144.9)	4.0	-	-	@210	37°11'00.9"N 126°50'01.0"E	-	RNAV 1	-
012	TF	GE028	-	153 (144.9)	4.0	-	-	@210	37°07'44.3"N 126°52'53.5"E	-	RNAV 1	-
013	TF	GE027	-	243 (234.9)	5.0	-	-	@210	37°04'51.6"N 126°47'46.7"E	-	RNAV 1	-
014	TF	ENPIL	-	333 (324.9)	5.9	-	+7 000	-	37°09'39.0"N 126°43'34.0"E	-	RNAV 1	IAF

HOLDING PROCEDURE

Holding Identification	Path Descriptor	Waypoint Identifier	Fly-over	Course/Track °M(°T)	Time (min)	Turn direction	Altitude (ft)	Speed (kt)	Coordinates	VPA/ TCH	Navigation specification	Remarks
RNAV OLMEV 2E	-	BOBIB	Y	051 (043.0)	1.5	L	+11 000	-250	37°05'31.6"N 127°03'59.2"E	-	RNAV 1	-
RNAV GUKDO 2E	-	KAKSO	Y	313 (304.9)	1.5	R	+FL 170	-250	37°07'44.6"N 127°26'37.4"E	-	RNAV 1	-
RNAV KARBU 2E	-	EGOBA	Y	267 (258.7)	1.5	R	+FL 170	-250	37°29'14.7"N 127°22'45.9"E	-	RNAV 1	-
RNAV GUKDO 2E	-	TESIK	Y	279 (270.1)	1.0	R	+10 000	-230	37°16'16.6"N 126°54'34.5"E	-	RNAV 1	-
ALL PROCEDURE	-	GE024	Y	153 (144.9)	1.0	L	+7 000	-210	37°11'00.9"N 126°50'01.0"E	-	RNAV 1	-

Change : Information of ALT restrictions for GE022 and GE028.

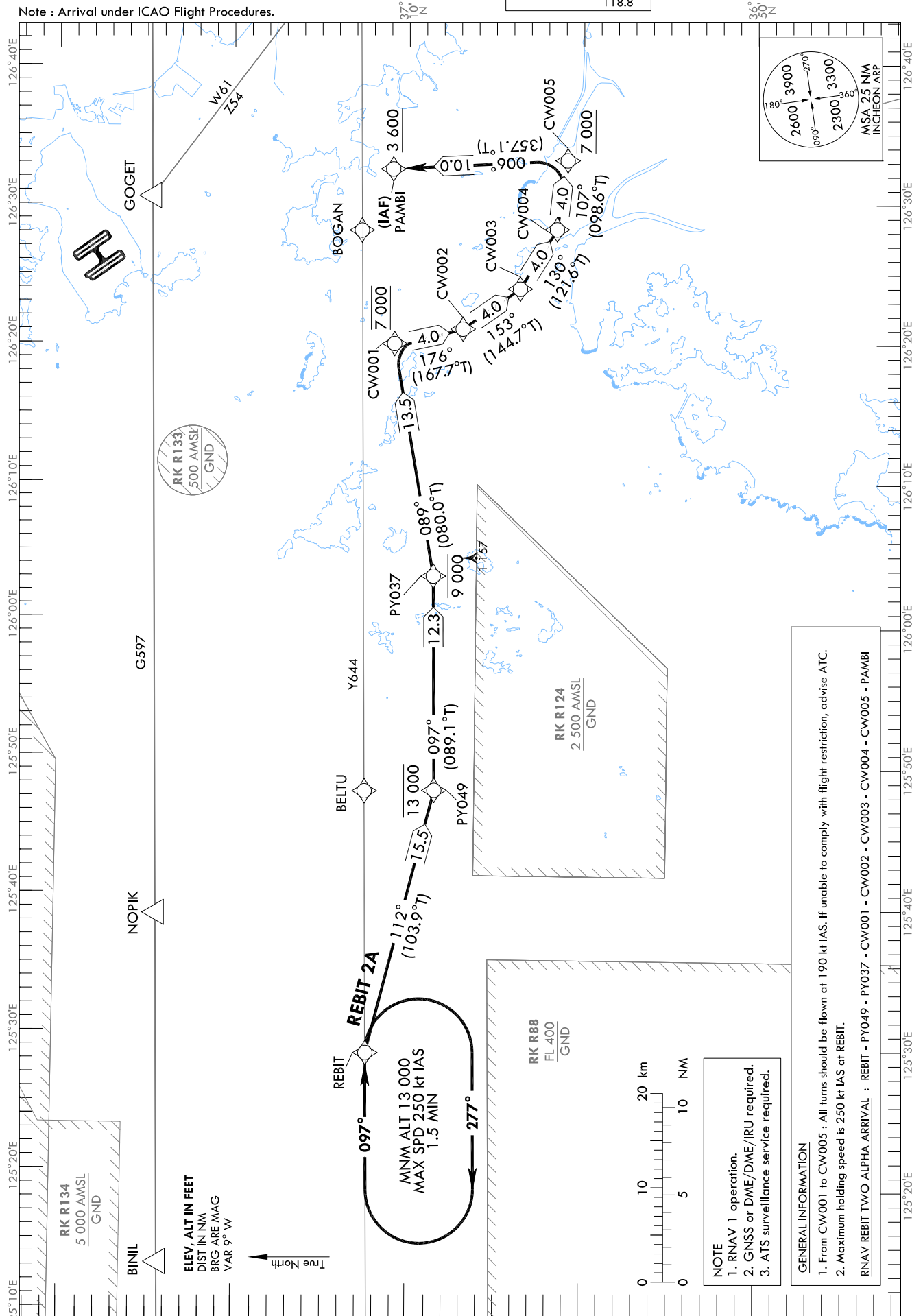
STANDARD ARRIVAL CHART INSTRUMENT (STAR) - ICAO

TRANSITION	ALT	14 000
TRANSITION	LVL	FL 140

SEOUL	APP	119.75
		121.35
INCHEON	TWR	118.2
		118.8

**SEOUL/Incheon Intl(RKSI)
RWY 33L/R, RWY 34L/R
RNAV RBIT 2A**

Note : Arrival under ICAO Flight Procedures.



Change : Amended arrangement of ALT restriction, Information of ALT restriction for PAMBI and Establishment of ALT restriction for CW005.

SEOUL/Incheon Intl(RKSI)
RWY 33L/R, RWY 34L/R
RNAV REBIT 2A

AERONAUTICAL DATA TABULATION

Standard Instrument Arrival Procedure Coding Tables

RNAV REBIT 2A												
Serial Number	Path Descriptor	Waypoint Identifier	Fly-over	Course/Track °M(°T)	Distance (NM)	Turn direction	Altitude (ft)	Speed (kt)	Coordinates	VPA/TCH	Navigation specification	Remarks
001	IF	REBIT	-	-	-	-	-	-	37°12'03.0"N 125°29'12.7"E	-	RNAV 1	-
002	TF	PY049	-	112 (103.9)	15.5	-	-13 000	-	37°08'17.9"N 125°48'04.6"E	-	RNAV 1	-
003	TF	PY037	-	097 (089.1)	12.3	-	-9 000	-	37°08'28.1"N 126°03'25.2"E	-	RNAV 1	-
004	TF	CW001	-	089 (080.0)	13.5	-	@7 000	@190	37°10'47.3"N 126°20'03.6"E	-	RNAV 1	-
005	TF	CW002	-	176 (167.7)	4.0	-	@7 000	@190	37°06'52.4"N 126°21'07.4"E	-	RNAV 1	-
006	TF	CW003	-	153 (144.7)	4.0	-	@7 000	@190	37°03'36.4"N 126°24'00.8"E	-	RNAV 1	-
007	TF	CW004	-	130 (121.6)	4.0	-	@7 000	@190	37°01'30.3"N 126°28'16.0" E	-	RNAV 1	-
008	TF	CW005	-	107 (098.6)	4.0	-	@7 000	@190	37°00'54.3"N 126°33'12.3"E	-	RNAV 1	-
009	TF	PAMBI	-	006 (357.1)	10.0	-	+3 600	-	37°10'54.3"N 126°32'34.4"E	-	RNAV 1	IAF

HOLDING PROCEDURE

Holding Identification	Path Descriptor	Waypoint Identifier	Fly-over	Course/Track °M(°T)	Time (min)	Turn direction	Altitude (ft)	Speed (kt)	Coordinates	VPA/TCH	Navigation specification	Remarks
RNAV REBIT 2A	-	REBIT	Y	097 (089.1)	1.5	R	+13 000	-250	37°12'03.0"N 125°29'12.7"E	-	RNAV 1	-

Change : Information of ALT restriction for PAMBI.